

O GECE SENDİN GELEN YA HAZRETİ MUHAMMED

Notaya Alan : Erdinç Bal
Beste : Mehmet Emin Ay



AR ŞİN KUB BE LE RİN DE



A DI NURLA YA ZILAN İS Mİ SE MA DA AH MED YER DE MU HAM



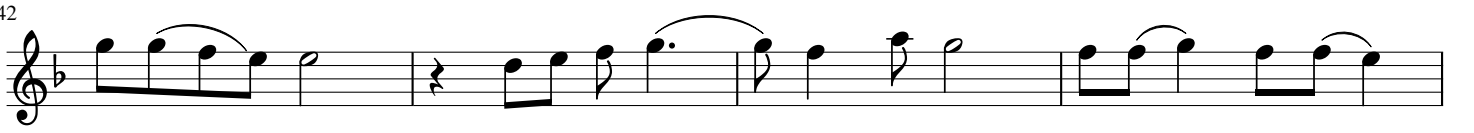
MED O LAN YE Dİ KAT LI GÖK LER DE HAK CE MA Lİ Nİ BU LAN



EV VEL A HİR YOL CU SU YA HAZ RE Tİ MU HAM MED



SAĞ NAK NUR YAĞ MUR LA RI İ NER KEN YE



Dİ KAT TAN O GE CE SEN DİN GE LEN E ZEL KA DAR



U ZAK TAN FE LEK LER HER ZER RE YE MÜJ DE VE RİR

50



Musical notation for line 50, featuring a treble clef, a key signature of one flat, and a 4/4 time signature. The melody consists of quarter and eighth notes with some slurs and accents.

KEN HAK TAN O GE CE SEN DİN GE LEN YA HAZ RE Tİ

54



Musical notation for line 54, featuring a treble clef, a key signature of one flat, and a 4/4 time signature. The melody includes a series of eighth notes and quarter notes with slurs.

MU HAM MED SAZ GÜ NEŞ LER O GE CE NİN NU RU NA SEC

59



Musical notation for line 59, featuring a treble clef, a key signature of one flat, and a 4/4 time signature. The melody consists of quarter and eighth notes with slurs.

DE DER KEN YIL DIZ LAR MEŞK İ ÇİN DE KA İ NAT VECD

63



Musical notation for line 63, featuring a treble clef, a key signature of one flat, and a 4/4 time signature. The melody includes quarter and eighth notes with slurs.

E DER KEN BÜ TÜN HAM DÜ SE NA LAR YÜ CE RAB BE


67



Musical notation for line 67, featuring a treble clef, a key signature of one flat, and a 4/4 time signature. The melody includes quarter and eighth notes with slurs and a repeat sign.

Gİ DER KEN O GE CE SEN DİN GE LEN YA HAZ RE Tİ

71



Musical notation for line 71, featuring a treble clef, a key signature of one flat, and a 4/4 time signature. The melody consists of quarter and eighth notes with a long slur.

MU HAM MED